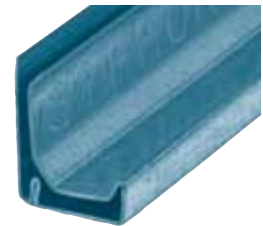
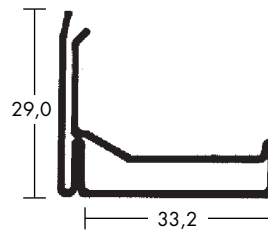


1.1.3 MEZ-SYPHON-FLANGE SYSTEM 40

**Complies to all requirements under
DIN 24194 / part 1**

- Higher degree of tightness through an integrated siphon
- **148 S** with injected sealing compound (sealant)
- Profile length: 5000 mm



DIN 24194
RWTÜV

Art.-Nr	Material	Material thickness/mm	Moment of inertia/cm ⁴	VPE m	Weight kg/m
148	Galvanised steel	1,25	3,220	250	1,403
148S	Galvanised steel	1,25	3,220	250	1,403

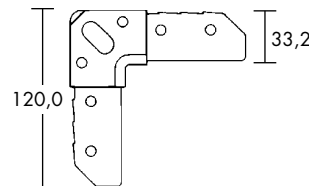
Workmanship Guidelines:

Maximum edge length (mm)		
500 PA	1000 PA	2500 PA
3000 mm	2700 mm	2500 mm

- The duct grooved seams do not need to be notched up
- For details on frame production see technical features

MEZ-CORNER

- Corner to be inserted into the duct wall
- Sealing done on the front side of duct and on the inside board of the angled corner



Art.-Nr	Material	Material thickness/mm	Screw hole mm	Deduction mass mm	VPE units	Weight kg/piece
248	Galvanised steel	4,00	26 x 13	30	200	0,184

