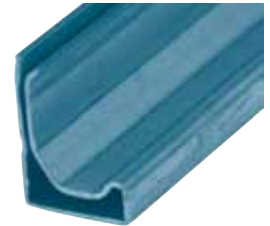
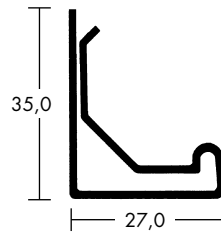


1.3 MEZ-CLASSIC-FLANGE®



1.3.2 MEZ-CLASSIC-FLANGE SYSTEM 30

- 45° supporting limb provides for optimum stability
- With a simple sealing bead
- High quality profile using thicker material
- More stiffness even for large edge lengths
- Profile length: 5000 mm



Art.-Nr.	Material	Material thickness/mm	Moment of inertia/cm ⁴	VPE m	Weight kg/m
130	Galvanised steel	1,00	1,118	500	0,918
132	Galvanised steel	1,25	1,425	500	1,153
130 E	Stainless steel	1,00	1,118	500	0,770
130 A	Aluminium	1,00	1,118	500	0,285

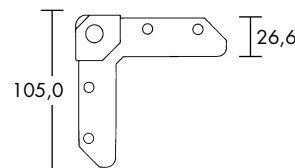
Workmanship Guidelines:

Art.-Nr.	Maximum edge length (mm)		
	500 PA	1000 PA	2500 PA
130	1800 mm	1600 mm	1200 mm
132	2500 mm	2250 mm	2000 mm

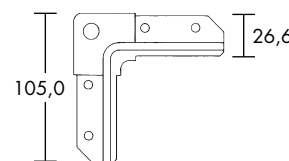
- The duct grooved seams do **not** need to be notched up
- For details on frame production see technical features

MEZ-CORNER

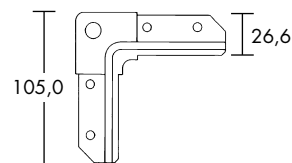
- Corner to be attached to the duct wall
- Sealing of the corners done on the inside of the air duct wall



Art.-Nr.	Material	Material thickness/mm	Screw hole ø mm	Deduction mass mm	VPE units	Weight kg/piece
230	Galvanised steel	4,00	13	10	250	0,127



Art.-Nr.	Material	Material thickness/mm	Screw hole ø mm	Deduction mass mm	VPE units	Weight kg/piece
233	Galvanised steel	3,00	11	30	250	0,104



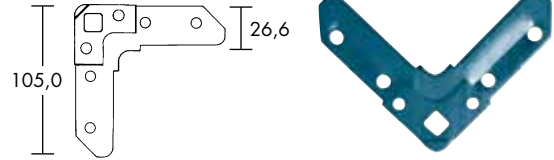
Art.-Nr.	Material	Material thickness/mm	Screw hole ø mm	Deduction mass mm	VPE units	Weight kg/piece
234	Galvanised steel	4,00	11	30	250	0,136
234 E	Stainless steel	4,00	13	30	250	0,136
234 A	Aluminium	4,00	13	30	250	0,050



1.3.2 MEZ-CLASSIC-FLANGE **SYSTEM 30**

MEZ-CORNER

- Corner for square bolt to be attached to the duct wall
- Sealing of the corners done on the inside of the air duct wall



Art.-Nr.	Material	Material thickness/mm	Screw hole mm	Deduction mass mm	VPE units	Weight kg/piece
233 V	Galvanised steel	4,00	11 x 11	30	250	0,104

