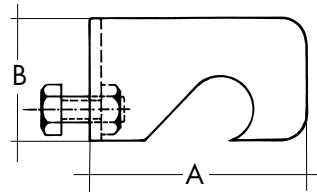


2.1 AIR DUCT STIFFENING

2.1.1 AIR DUCT STIFFENING 3/8"

MEZ-KREUZ

- Fastener for crossover stiffenings
- For large duct cross-sections
- For pipe diameter 3/8"

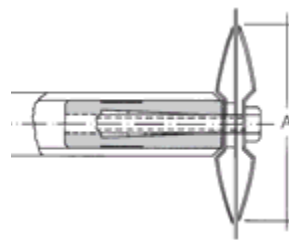


Art.-Nr.	Material	A	B	VPE units	Weight kg / 100 units
400	Galv. steel	60	35	100	11,000
400 E	Stainless steel*	60	35	50	11,000

* on demand

MEZ-TELLER

For the metal-on-metal contact and bolting of pipes onto the air duct wall using parallel or crossover stiffenings



Art.-Nr.	Material	A Ø mm	Thread fit	VPE units	Weight kg / 100 units
405	Galv. steel	70	M 6	1000	3,000
405/E	Stainless steel*	70	M 6	100	3,000

* on demand

Assembly components for screw joint between pipe and air duct wall:

DOWEL

- Dowel for screws with metric screw threads, per m² single dowel offering triple security
- Dowel extraction force (breaking force) 9 kN at 2500 Pa pressure

Art.-Nr.	Material	Mass Ø mm	Internal thread	VPE units	Weight kg / 100 units
410	PVC / Brass	40/12	M 6	100	0,700



SEALING

Art.-Nr.	Material	Mass mm	Internal thread	VPE units	Weight kg / 100 units
406	HDPE	15 x 6 x 3	M 6	1000	0,040



HEXAGON BOLT

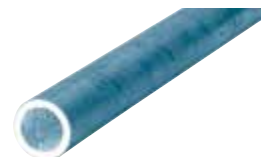
Art.-Nr.	Material	DIN	Thread	VPE units	Weight kg / 100 units
415	Galv. Steel	933	M 6x50	200	1,100



PIPE

Welded threaded pipe as per DIN 2440/2444 EN 10240

Art.-Nr.	Material	Ø	Outside dimension mm	Inside dimension mm	VPE m	Weight kg / m
417	Galv. Steel	3/8"	17,2	11,5	6	0,890



SEAMLESS PIPES

DIN 2391/C part 1+2, Ausg. 9.94, DIN 2445-2/DIN 1630, St 37.4 NBK

Art.-Nr.	Material	Wall mm	Outside dimension mm	Inside dimension mm	VPE m	Weight kg / m
417/1512	Galv. Steel	1,5	15,00	12,0	6	0,500

