

3.1 MANUAL ADJUSTER for valves

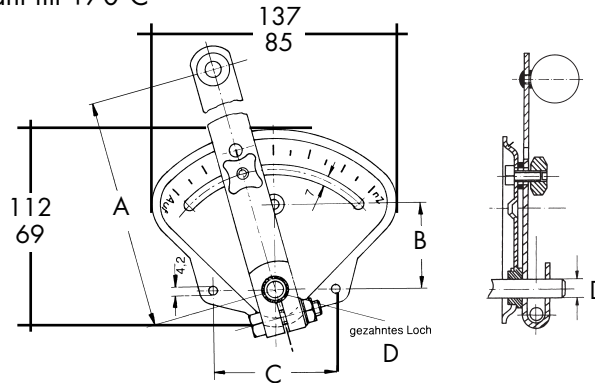
Manual adjuster for butterfly valves with counter bearings

3.1.1 MEZ-DAMPER VALVE S

with PVC bearing bush, heat resistant till +70°C

Product description:

- Lever with ball lever and star shaped handgrip-screw
- Fastening segment
- Clamping screw
- Ball bearing-equalising shim washer
- 2 units PVC bearing bush
- 2 units retaining rings



Art.-Nr.	Material	A	B	C	D Ø	S	Valve breadth	VPE units	Weight kg/unit
346	Galv. steel	140	50	72	10	1,25	700	1	0,330
348	Galv. steel	140	50	72	12	1,25	700	1	0,330
349	Galv. steel	140	50	72	13	1,25	700	1	0,330
350	Galv. steel	140	50	72	14	1,25	700	1	0,330
350 E	Stainless steel	140	50	72	14	1,25	700	1	0,330
353	Galv. steel	140	50	72	15	1,25	700	1	0,330
354	Galv. steel	140	50	72	16	1,25	700	1	0,330
355	Galv. steel	140	50	72	17	1,25	700	1	0,330
355 E	Stainless steel	140	50	72	17	1,25	700	1	0,330
Art.-Nr.	Material	A	B	C	D Ø	S	Valve breadth	VPE units	Weight kg/unit
356	Galv. steel	90	30	45	6	1,00	500	1	0,100
357	Galv. steel	90	30	45	8	1,00	500	1	0,100
358	Galv. steel	90	30	45	10	1,00	500	1	0,100
358 E	Stainless steel	90	30	45	10	1,00	500	1	0,100

Individual customisation on request

Workmanship + Assembling:

- Ideal for rectangular and circular air duct systems
- Easy to assemble using a rivet on a three-point connection

MEZ-AXLE

Art.-Nr.	Material	Ø mm	VPE units	Weight kg/unit
375	Galv. steel	10	1	0,05

Art.-Nr.	Material	Ø mm	VPE units	Weight kg/unit
376	Galv. steel	14	1	0,05
377	Galv. steel	12	1	0,05

