

3.1 MANUAL ADJUSTER for valves

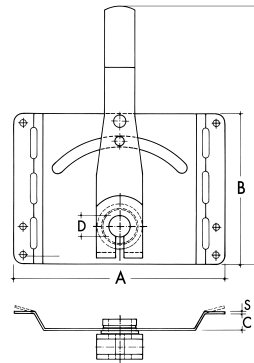
Manual adjuster for butterfly valves with counter bearings

3.1.2 MEZ-DAMPER VALVE FS

with PVC bearing bush, heat resistant till +70°C

Product description:

- Lever using wing screw
- Fastening segment
- Clamping screw
- Ball bearing-equalising shim washer
- 2 units PVC bearing bush
- 2 units retaining rings



Art.-Nr.	Material	A	B	C	D Ø	E	S	Valve breadth	VPE units	Weight kg/unit
360	Galv. steel	140	100	10	10	165	1,50	700	1	0,350
360 E	Stainless steel	140	100	10	10	165	1,50	700	1	0,350
361	Galv. steel	140	100	10	12	165	1,50	700	1	0,350
361 E	Stainless steel	140	100	10	12	165	1,50	700	1	0,350
362	Galv. steel	140	100	10	14	165	1,50	700	1	0,350
362 E	Stainless steel	140	100	10	14	165	1,50	700	1	0,350

Individual customisation on request

Workmanship + Assembling:

- Ideal for rectangular and circular air duct systems
- Easy to assemble using a rivet on a four-point connection
- The bending point has been constructed to match to the different pipe forms

MEZ-AXLE

Art.-Nr.	Material	Ø mm	VPE units	Weight kg/unit
375	Galv. steel	10	1	0,050

Art.-Nr.	Material	Ø mm	VPE units	Weight kg/unit
376	Galv. steel	14	1	0,050
377	Galv. steel	12	1	0,050

