

## 3.1 MANUAL ADJUSTER for valves

### Manual adjuster for regulating and shutting off air flow

#### 3.1.7 MEZ-PILZ-DAMPER VALVE Set

- For valve sheets having a thickness of 1.0 till 1.75 mm
- For Air Ducts with cross-sections till 500 mm
- Ideal for rectangular and circular air duct systems

#### Product description:

- 2 units MEZ-PILZ axis elements
- Blade locking screw
- Varying pulley
- Blind nut
- Washer



Art.-Nr.	Material	Valve breadth	VPE units	Weight kg/unit
311	Galv. steel	500	100	0,080
312	Galv. steel	500	50	0,130

### Single units for individual needs

#### Varying pulleys

Art.-Nr.	Material	Ø mm	VPE units	Weight kg/unit
311/1	Galv. steel	70	100	0,021
312/1	Galv. steel	100	100	0,064



#### Axis

Art.-Nr.	Material	Ø mm	VPE units	Weight kg/unit
313	Galv. steel	10	1000	0,015



#### Blind nut

Art.-Nr.	Material	Thread	VPE units	Weight kg/unit
314	Nylon	M 6	100	0,002



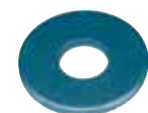
#### Wing screw

Art.-Nr.	Material	Thread	VPE units	Weight kg/unit
315	PVC/Steel	M 6 x 15	100	0,007



#### Washer DIN 125

Art.-Nr.	Material	Thread fit	VPE units	Weight kg/unit
435	Galv. steel	M 6	100	0,001

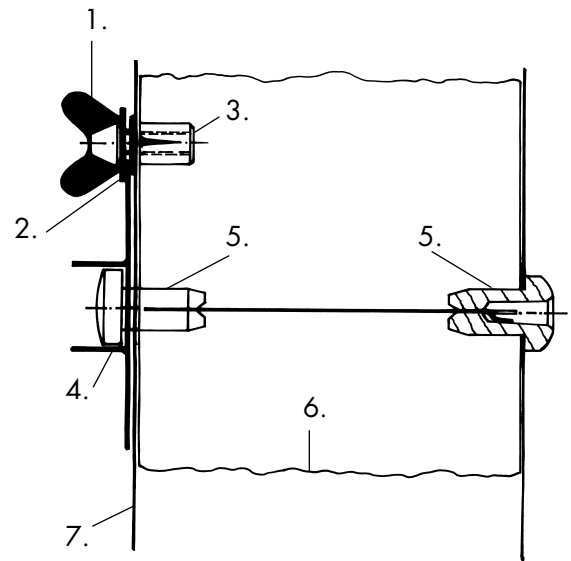


## 3.1 MANUAL ADJUSTER for valves

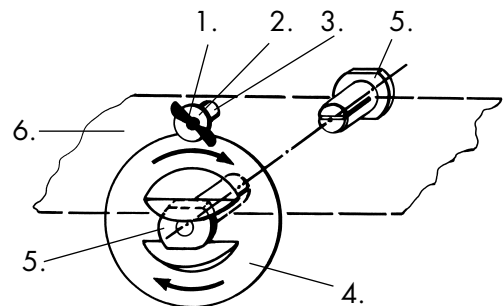
### 3.1.7 MEZ-PILZ-DAMPER VALVE Set

#### Workmanship + Assembling:

1. Measure and cut valve
2. Drill holes for axis 10,5 mm  $\varnothing$  and for screws 6,5 mm  $\varnothing$
3. Install MEZ-PILZ-AXLE at duct wall
4. Stick in valve blade
5. Install varying pulley and valve blade with axis
6. Adjust valve blade
7. Duct wall



1. Screw
2. Washer
3. Blind nut
4. Varying pulley
5. MEZ-PILZ-AXIS
6. Valve blade



### MEZ-PILZ-DRILLING-TOOL

Art.-Nr.	VPE units	Weight kg/unit
715	1	0,020

